



NM500

nepes Neuromorphic Technology Overview

Practical artificial Intelligence Enabler

Index

INTRO.

1. What is Neuromorphic?

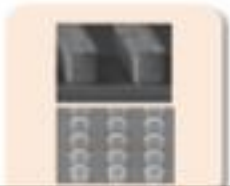
2. NM500

3. Application (Demo)

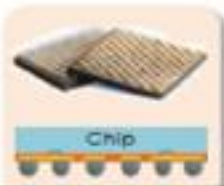
OUTRO.

Business Based on Advanced Semiconductor Packaging

nepes is now expanding its scope of business based on the **semiconductor technology**.



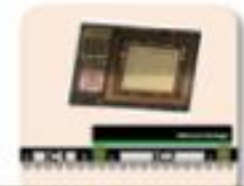
Flip-chip Bumping



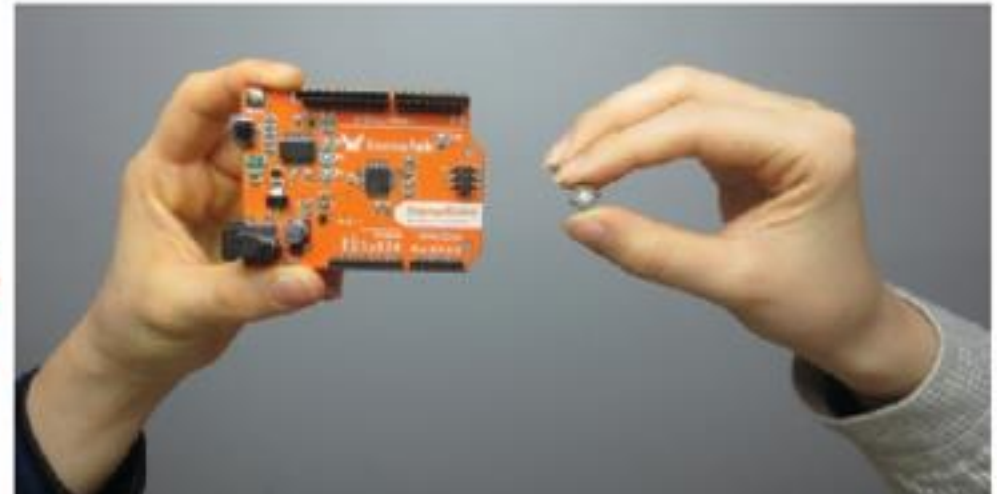
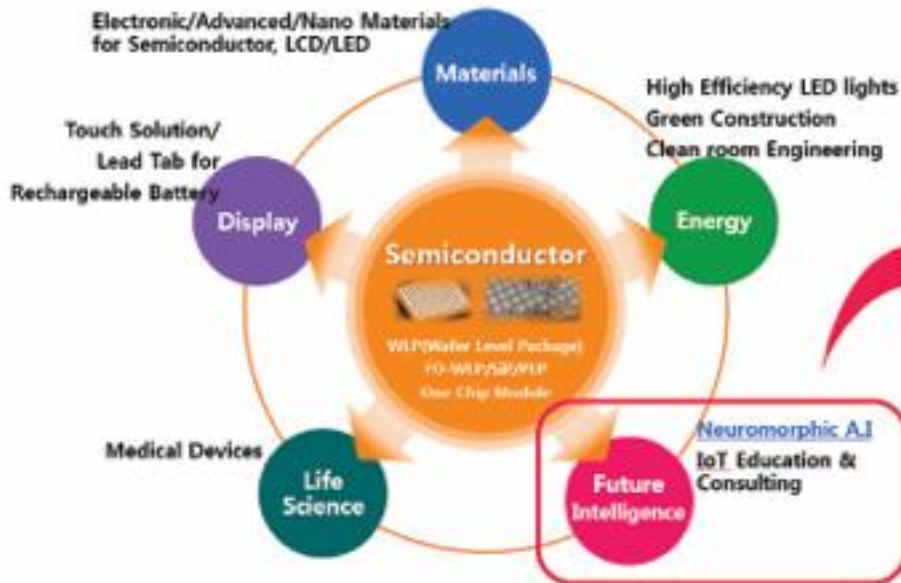
WLP



Fan-out WLP

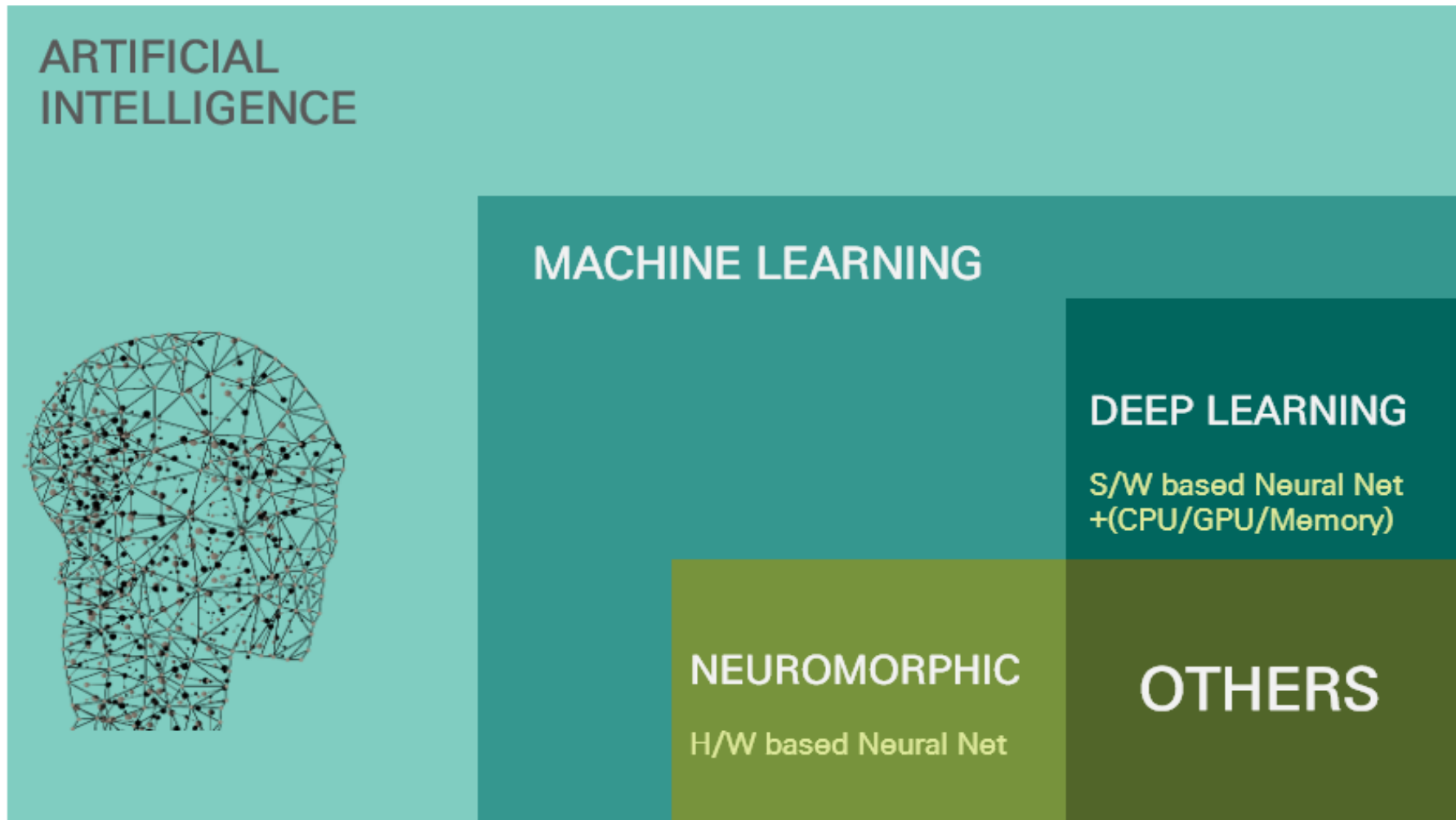


System in PKG / Module



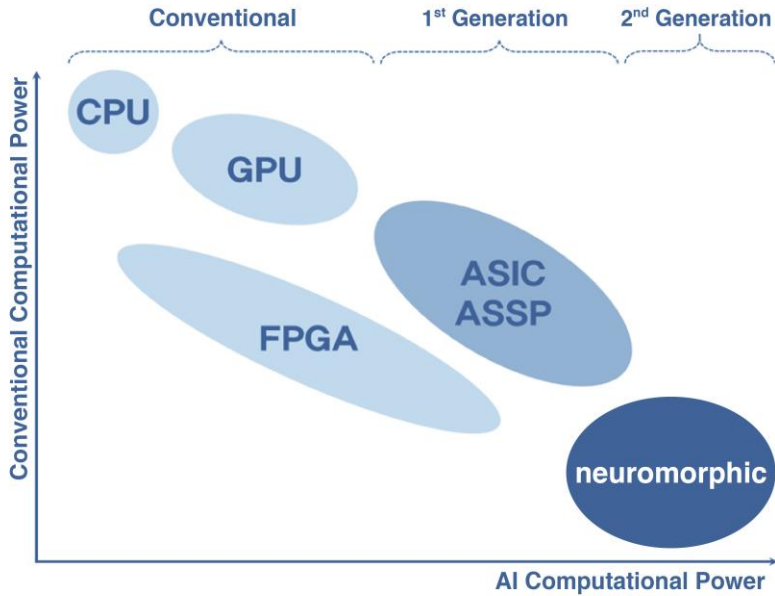
- * **The meaning of nepes** : Eternal Life in Hebrew
- * **Date of establishment** : Dec. 1990
- * **Number of employees** : 2,000~ in 2017 (\$ 350 million in revenue)

“**A.I system** is to support human’s decision making more precise, quick and correct, based on deep evidences without bias” - IDC, 2017



Intro (AI Hardware Evolution Map)

Evolution of Artificial Intelligence Hardware



* IBM Truenorth is not commercialized yet.

** Brainchip only sells their IP, not real chip.

- nepes Neuromorphic is the first and only chip you can buy now!

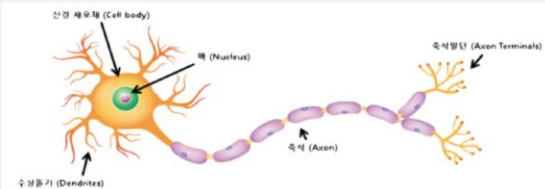
Company	Cloud Computing				1-Chip	Edge Computing Standalone			
	GPU	FPGA	ASIC	Neuromorphic		GPU	FPGA	ASIC	Neuromorphic
U.S.A	Semiconductor	intel							
		NVIDIA	●				●		
		AMD	○						
		XILINX		●					
	IT	Google	●						
		Microsoft							
		amazon.com							
		IBM							● *
	etc.	Apple				●			
		Hewlett Packard							
		TESLA							
		cerebras	△						
	Start-up	Wave Computing			○				
		MYTHIC							
		thinci							
		groq			△				
		KNU-DGE							
		NOVUMIND			○				
brainchip								○ **	
adaptvea				△					
TERADEEP			△						
gyrfalcon									
China	Company	HISILICON				○			
		Cambricon							
		Horizon Robotics							
		DEEPI			○				
		BITMAIN			○				
		Think Force			△				
	School	Unisound							
		intel AI Fusion							
		清华大学 (칭화대)							
		中科院 (과학원)							
		삼성전자					○		
		nepes							○
Korea	Company	NEXELL		△					
		ETRI							
	School	서울대학교							
		KAIST							

●: A market leader ○: A market chaser △: Product under development

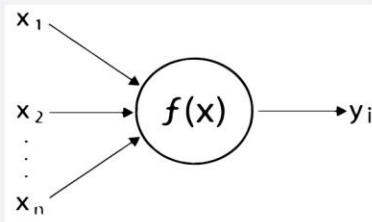
Source : IITP, 2018

Inspiration from biology to design hardware models of neural and sensory systems.

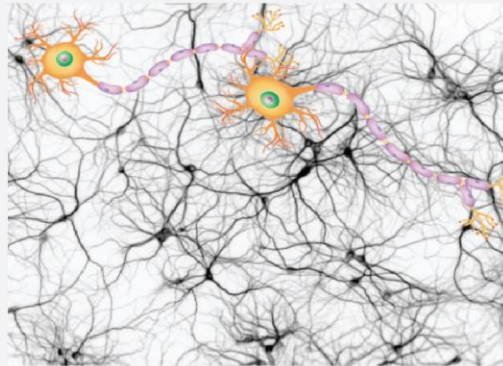
Neuron



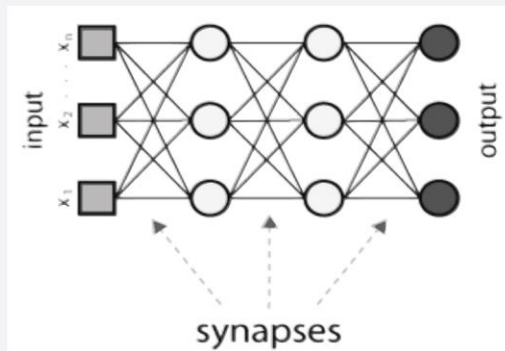
Perceptron



Neural Network



Artificial Neural Network



(Neuromorphic Chip)

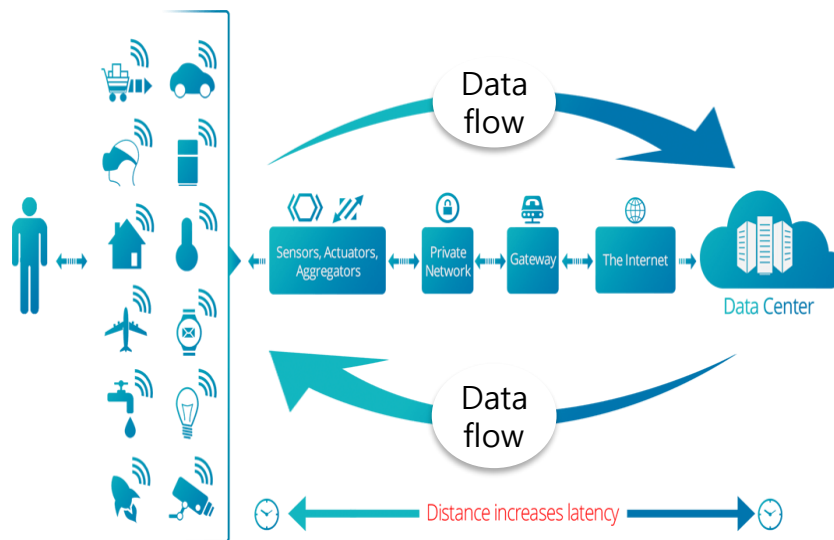


(Von Neumann Computing)



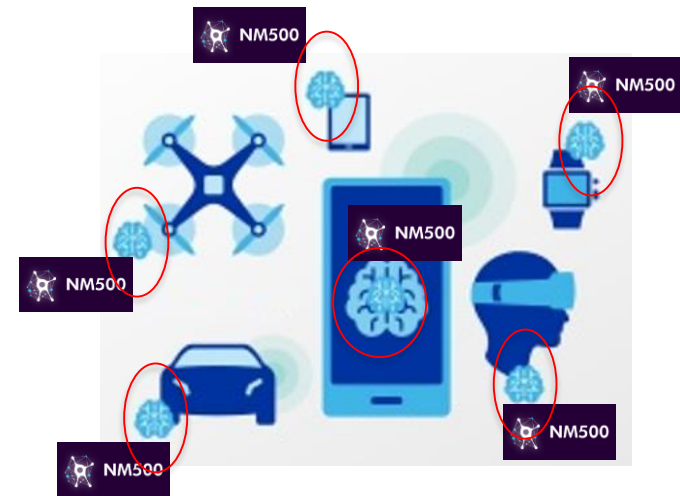
What is neuromorphic (Why AI at the Far Edge)

- Cloud computing is a great solution for the current AI era.
 - Higher cost of computing power for faster (increased cost)
 - More fast & stable network connections (increased security issues)
- If the sensor is intelligent coupled and learn and judge information directly
 - Real Time Processing under milliseconds & Low network traffic in the workplace .(Small embedded AI)
 - Performs AI functions independently of the network & user-specific application.(Free from security issues)



Server/Cloud

- Training
- Execution/Inference



Devices

- Execution/Inference
- Training (On the fly)

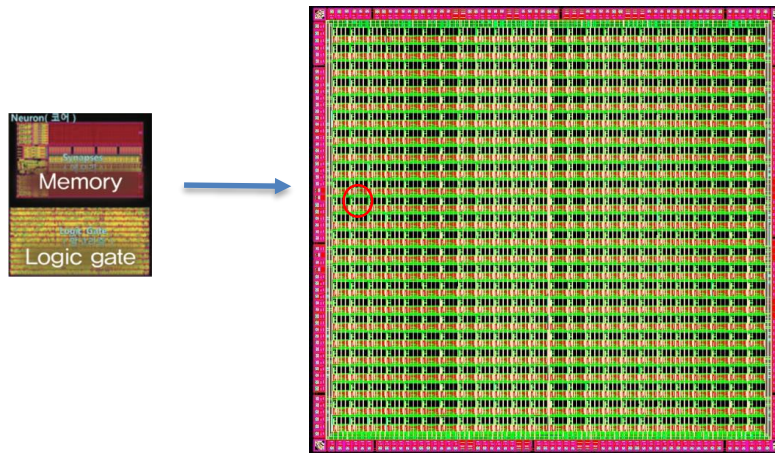
Image source : <https://www.vapor.io/>
Current IoT infographic

Sourced :Qualcomm
Modified : nepes

- ◆ NM500's Neuron = **Reactive logic** to learn and recognize + **Memory**
 - **Reactive logic** : Modeled on biological brains – designed to process (or classify) sensory data such as images and sound and respond to changes in that data in ways not specifically programmed
 - **Memory** : Store the processed result data or the vector data to be processed

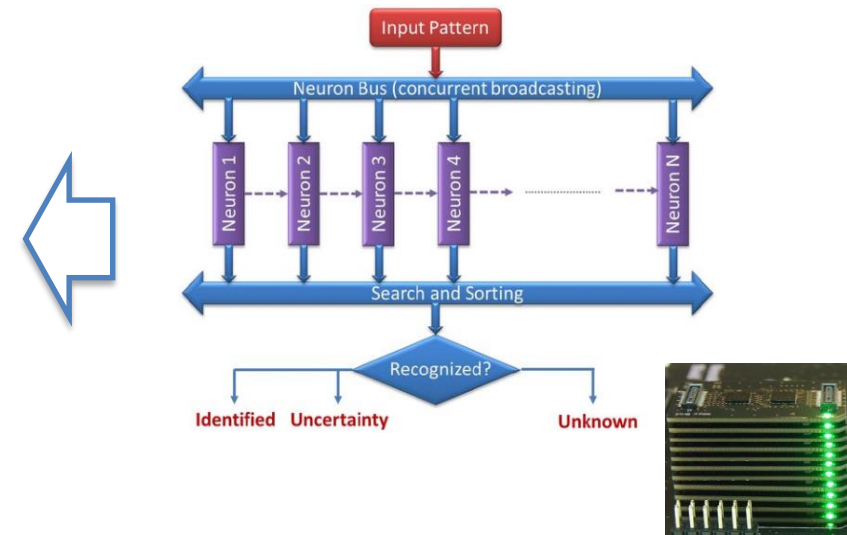
Non-linear Classifier : RBF(RCE) , KNN

- Neuron : A component with **memory storage**
+ reactive logic to **learn and recognize**



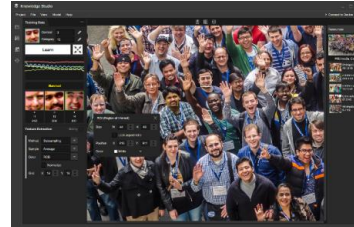
- Small(4.5mm²) & low power (0.15W)
- Ready to Industry level & Automotive level(Device Level) Reliability

Hardwired parallel Architecture

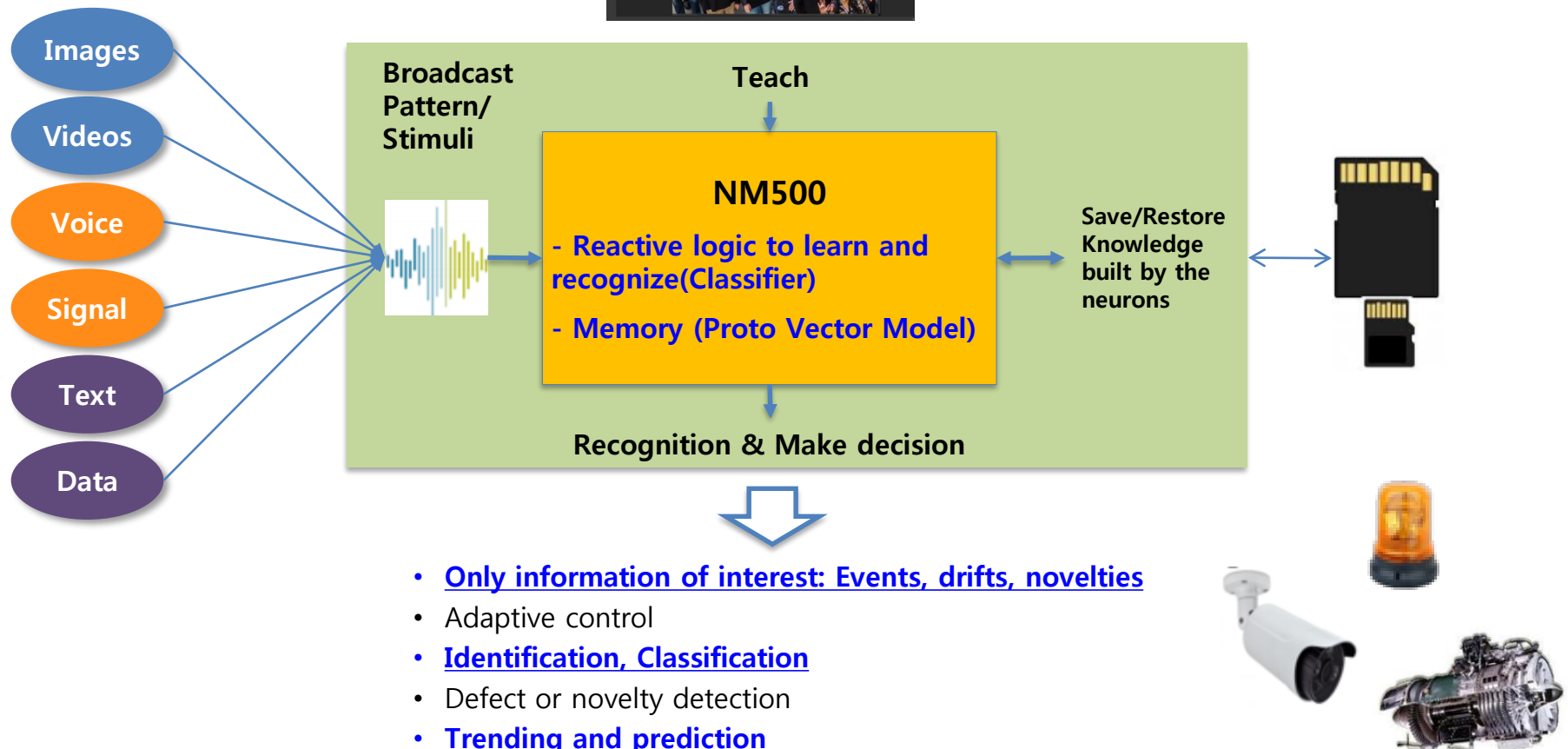


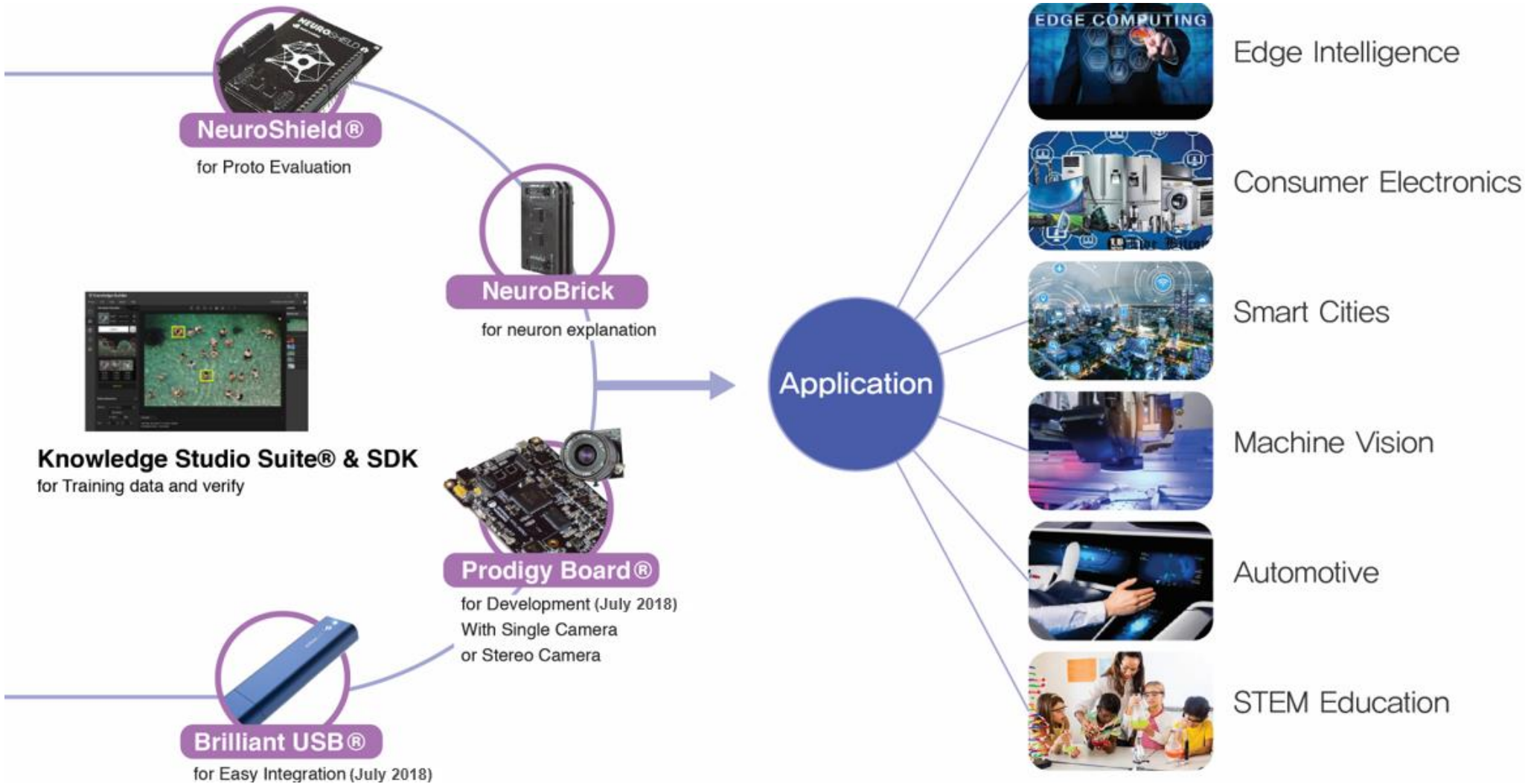
- Deterministic High Speed latency (μ secs regardless of the size of the network)
- Easy expandable neuron Quantity.

- Live video
- Images, movie files
- Voltage, Torque, Sound, Vibration
- Temperature (human, ambient)
- Biosensors



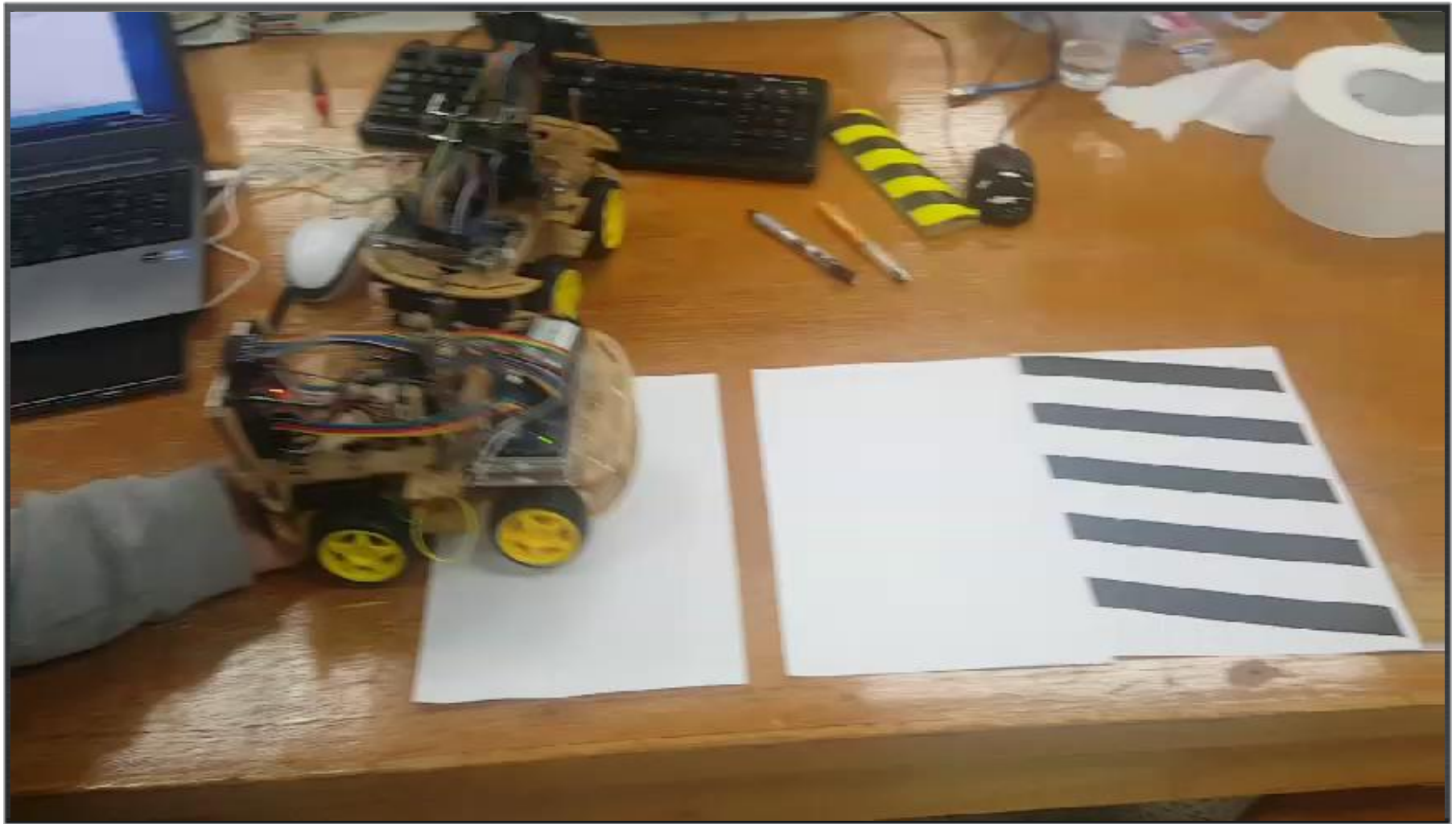
Knowledge Studio
-Show & Tell ecosystem





Gesture Recognition







Automatic Object Classification

Determine the color and defects of objects and classify them after learning a variety of objects.

BrilliantUSB

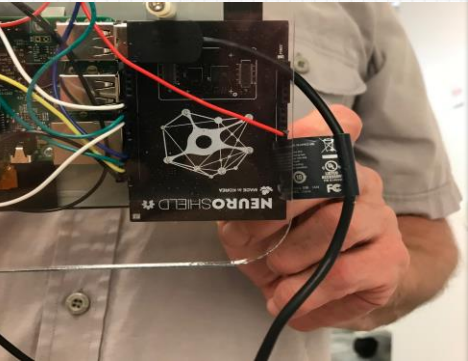


NM500을 활용한 COF ILB Flying Chip 검출

- P&T장비팀 -



Harvest Vision
AI Vision to Boost Yields



Harvesters could receive AI data
in real-time and react

AgTech Hackathon in Hawaii, Winner!

NM500 is using to inspect Kahuai coffee.



Real Time Face Recognition



Smart Door Lock with NM500





Unsupervised Learning and Novelty Detection



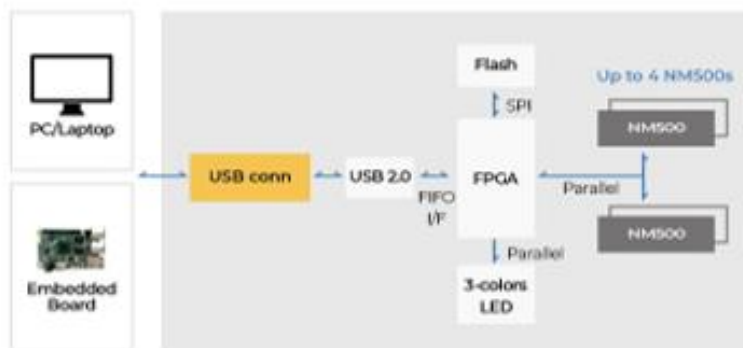
BrilliantUSB

Start A.I. Development in 30 Seconds!

BrilliantUSB® is an easy to use Artificial Intelligence evaluation and development tool. Thanks to the NeuroMem H/W Artificial Intelligence technology, it has compact USB memory type form factor easily inserted into the standard USB port of your PC/Laptop to develop A.I. enabled application instantly. No need to learn complicated algorithm programming such as C++ or Python, it uses graphical user interface software called 'Knowledge Studio' which is as easy as using powerpoint or photo editing S/W.

BrilliantUSB® features 500 ~ 2,000 neuron engines to cover requirements from DIY hobbyists to those serious application developers. Each neuron engine can learn and classify from images, videos, signals and text from saved data or capture and learn live data from other standard USB peripherals such as USB Cameras, Mics, Kinects and etc. No cloud, no training server is necessary.

Training and Inferencing is seamlessly done inside the same BrilliantUSB® in real-time at the field you are using your A.I. application.

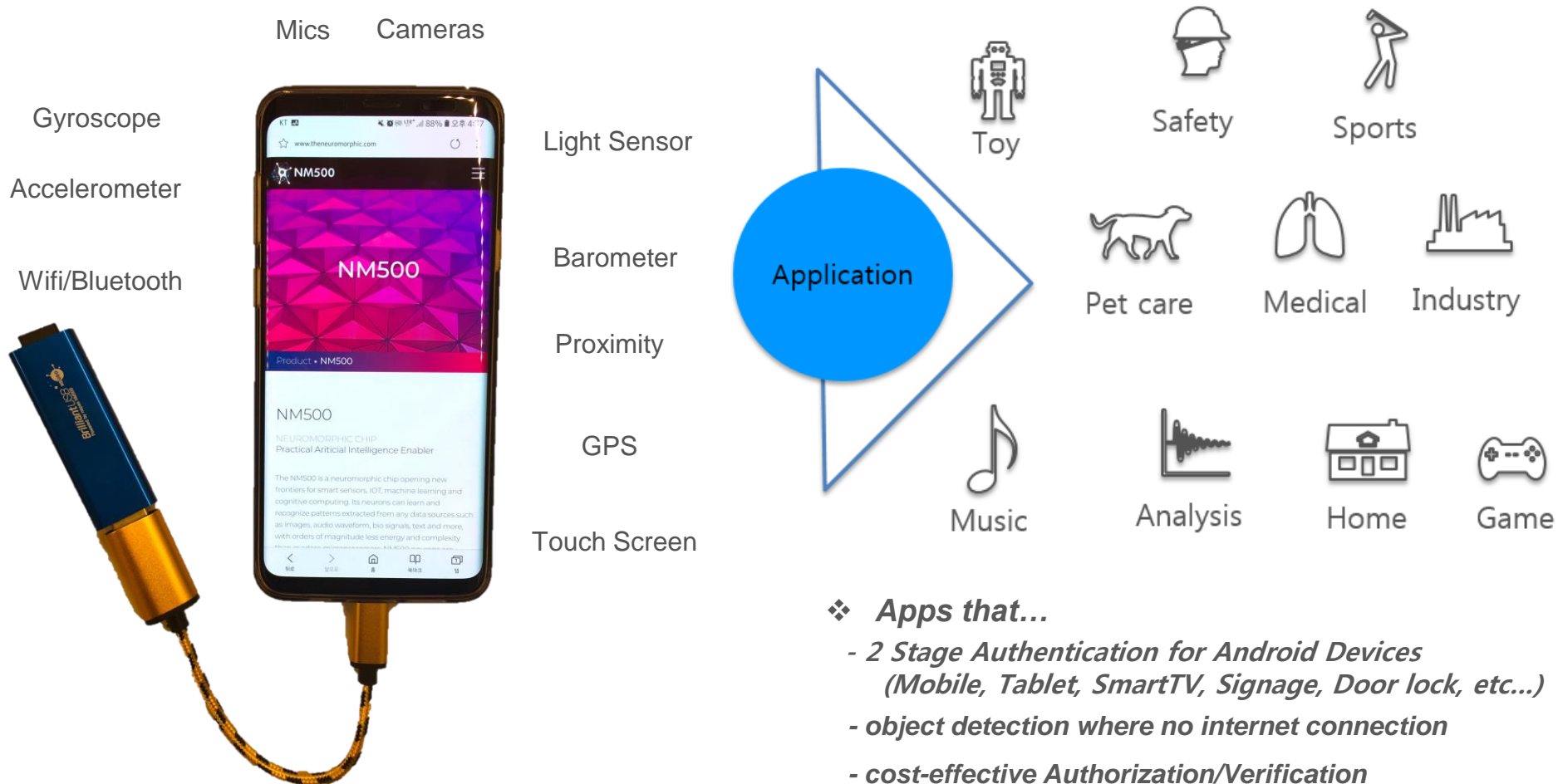


[BrilliantUSB® Specification]

- + NM500 chip (576 neurons) up to 4 NM500s (2,304 neurons)
 - + USB2.0 support
 - + X03 FPGA for interconnection
 - + On-flash memory for saving user knowledge data
 - + 3-colors LED indicator
 - + @48Mhz(FPGA),@35Mhz(NM500) <150mW
- | | |
|----------------|---------|
| + OS platforms | Windows |
| | Mac OSX |
| | Linux |
| | Android |

Face Recognition with NM500

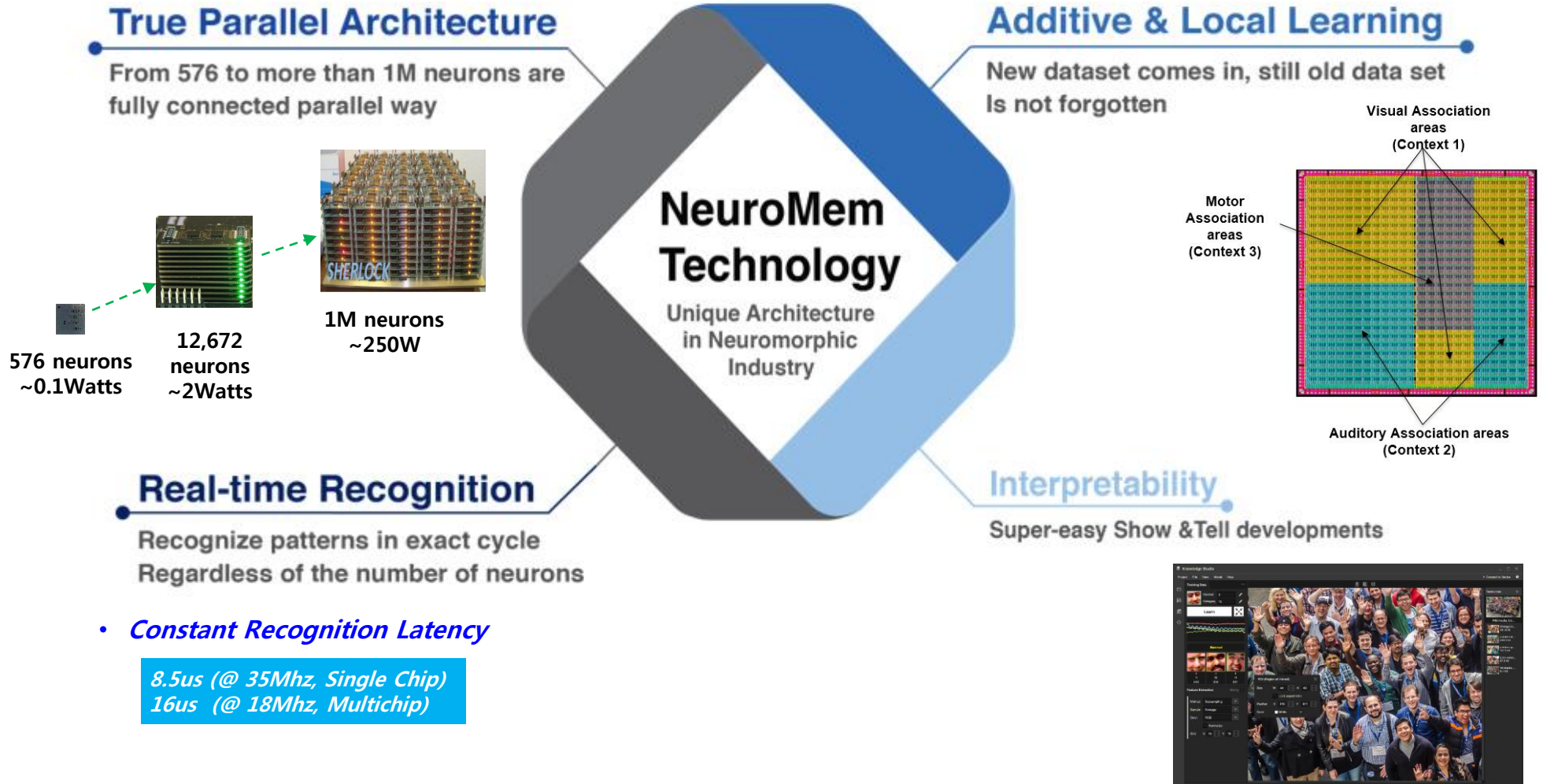




❖ **Apps that...**

- 2 Stage Authentication for Android Devices (Mobile, Tablet, SmartTV, Signage, Door lock, etc...)
- object detection where no internet connection
- cost-effective Authorization/Verification
- Field data training device
- Education
- Imagination is the limit...

The NeuroMem technology is a crucial enabler for cognitive computing and artificial intelligence.



Artificial Intelligence PRODUCTS with NM500

NM500 is a *direction* and not a *destination*!

Thanks!

www.theneuromorphic.com

ai-lab@nepes.co.kr

+82-2-3470-2791